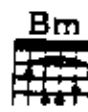


# SHUFFLE OFF TO BUFFALO



Song

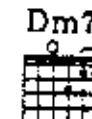
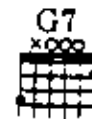
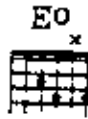
one that you'll a - dore, I'm gon - na take you for a ride. I'll go

*poco rit.* *a tempo*

ONCE ONLY

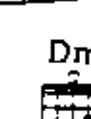
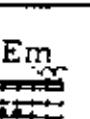
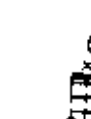
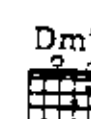
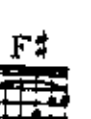
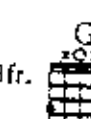
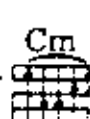
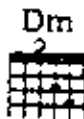


Refrain



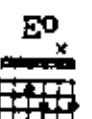
home and get my pant - ies, you go home and get your scant - ies, and a - way we'll go.

*p-f*



Mm! Off, we're gon - na shuf - fle, shuf - fle off to Buf - fa - lo.

*Mm!*



To Ni - ag - 'ra in a sleep - er, there's no hon - ey-moon that's cheap - er, and the

*Mm!*

# shuffle to buffalo 2

G7 Dm7 G7 Dm C#m Cm G F# Dm7 G7

train goes slow. Ooh! Off, we're gon - na shuf - fle,

G F# Dm7 G7 C F C Dm7 C C7 F Gm7 C7

shuf - fle off to Buf - fa - lo. Some-day, the stork may pay a

F C7 F D7

vis - it and leave a lit - tle sou - ve - nir. Just a

G Am7 D7 G Em7 Am7 Cm D7

lit - tle cute "what - is - it," but we'll dis - cuss that lat - er,

# shuffle to buffalo 3

Guitar chords: G7, C, E0.

dear. For a lit - tle sil - ver quar - ter, we can have the pull - man por - ter turn the

Guitar chords: G7, Dm7, C7, Dm, C#m (4fr.), Cm (3fr.), G, F#, Dm7, G7.

lights down low. Ooh! Off we're gon - na shuf - fle,

Guitar chords: G, F#, Dm7, G7, C (1fr.), Ab7 (4fr.), Dm7, Db7 (4fr.).

shuf - fle off to Buf - fa - lo. I'll go

Guitar chords: F#m7-5, B7, Em, F#m, F#m6, C.

lo. Shuf - fle off to Buf - fa - lo.

ASS.

# DAMES

no Rpt

4 16

SLOWER no Rpt SHUFFLE OFF TO BUFFALO

TO 4/2 and TO 4/2

OUR LULLABY OF BROADWAY.